

3-BHK PLUSH APARTMENTS



ATHARVA
RESIDENCES

ATHARVA RESIDENCES

If it's all about first impressions, Atharva Residences, a scheme of ten 3-BHK Apartments, will dazzle you. Its elegance is something that can only be achieved by craftsmanship that is, at once, painstaking and effortless. Starting from an appealing elevation, Atharva Residences guides you into its charming heart. We know nothing less than A-Grade specifications will do. With its thoughtful architecture that embraces both aesthetics and science, a home at Atharva Residences is like a living masterpiece. Everything, from the spaciouly appointed rooms to the top-notch fittings, is just what you had dreamed of.

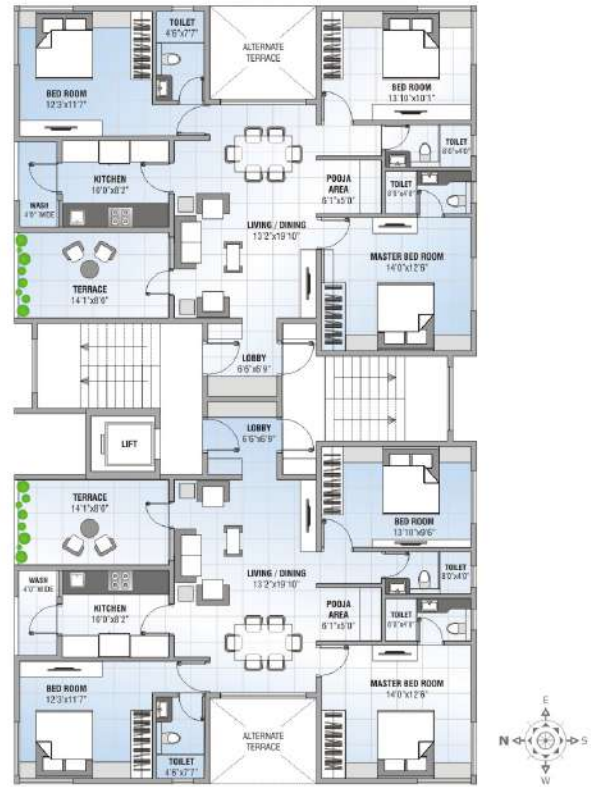


FIRST, THIRD AND FIFTH FLOOR PLAN



SECOND AND FOURTH FLOOR PLAN

ATHARVA
RESIDENCES



SPECIFICATIONS

DOORS

- Teak wood finish doors with melamine polish

WINDOWS

- Colour anodized aluminium windows

FLOORING

- Vitrified tile flooring in entire flat

KITCHEN

- Cooking platform with granite top
- Dado in vitrified / glazed tiles up to 4' height above the platform

TOILET

- Branded designer glazed tiles of Kajaria / RAK or equivalent make
- Plumbing fitting of Jaguar or equivalent make
- Sanitary ware of Hindware or equivalent make in white colour

NOTE

- Extra charges for M.S.E.B. network, water meter, stamp duty & registration
- Extra work will be done with extra payment in advance
- Service tax, VAT, LBT and other taxes will be borne by the purchaser as applicable time to time

ELECTRICAL

- Concealed fire resistant copper wiring of Finolex or equivalent make
- Modular switches & MCB of Legrand or equivalent make
- Adequate light and power points
- A.C. and T.V. points in living and all bed rooms

PAINTING

- Acrylic emulsion paint to all internal walls of Berger / Dulux make
- Water-proof exterior emulsion of Berger / Dulux make for external painting

LIFT

- Automatic lift of reputed brand
- GYMNASIUM FOR THE RESIDENTS
- CCTV CAMERAS FOR SECURITY
- SOLAR WATER HEATER
- ELECTRICITY BACK-UP FOR COMMON UTILITIES

LOCATION

ATHARVA
RESIDENCES



GYMNASIUM



CCTV



SOLAR WATER HEATER



ELECTRICITY BACK-UP

Architects:
SKA CONSORTIUM
Nagpur

Structural Consultants:
**SKYLINE CONSULTING ENGINEERS
PVT. LTD.**
Nagpur

For bookings & enquiry, call:
8888 6666 88 • 9922 4138 86



A Project by

nANIK ADISUN INFRA

O-1, R.P.T.S. Road, Laxmi Nagar, Nagpur - 440 022 (M.S.), INDIA

Note: This brochure is purely a conceptual presentation and not a legal offering. Pictorial depiction and details of buildings, layouts, specifications, designs, dimensions, etc. as shown in this brochure are tentative, indicative and subject to amendment, variation and modification by the Company at its sole discretion and without any notice.